



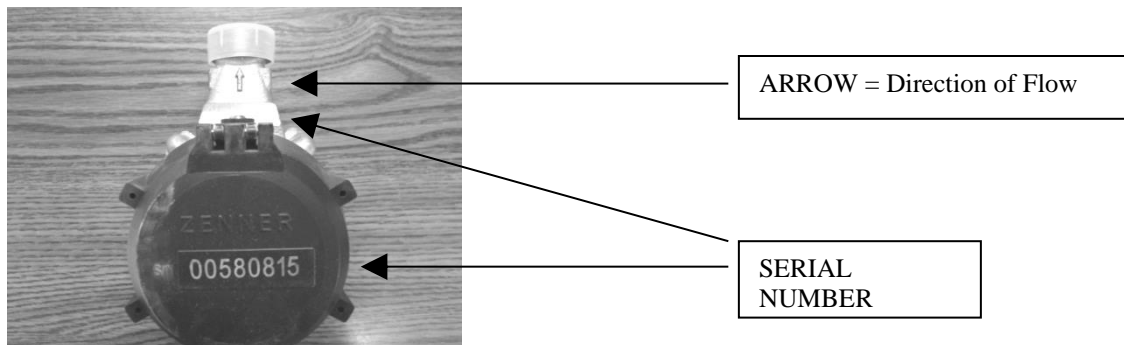
**YORK SEWER DISTRICT**  
**P.O. BOX 1039**  
**YORK BEACH, MAINE 03910**  
**(207) 363-4232**

## **Installation of Private Meters**

**Registration of Meter:** You must notify the District in writing upon installation of a new meter. You must include the brand, serial number of the meter, installation date and start reading of meter. Please provide us with a picture of your meter or complete a meter reading form that can be found on our website and indicate that this is a new meter.

**Type of Meter:** Our billing system works in **Cubic Feet** so all new meters and meters when replaced must read in cubic feet. Meters are available for sale at most plumbing supply stores. Please check our website for a list of possible suppliers.

**Installation:** Use the arrow on the meter itself to determine which way to install the meter. The arrow is pointing in the direction that the water will be flowing.



**Inspection:** Inspection of the meter connection by the District in certain circumstances.

Any questions, please call 207-363-4232.